



*Where There's Energy, There's Opportunity™*

**Service Parts and Accessories Catalog**

**140H, 200H, 350H, 200B, 375B, 500B**

Effective January 17, 2022



1024 BRYDEN AVE SUITE 1  
LEWISTON, ID 83501  
(208) 790-0365

[WWW.THEPRESSUREDR.COM](http://WWW.THEPRESSUREDR.COM)

Table of Contents, Using this Catalog.....	2
Terms and Conditions.....	3
Burner Assembly.....	4-5
Preheater Assembly.....	6
Nozzle-Line Assembly.....	7
Fuel Pump Assembly.....	8
Boiler Vessel Assembly & Controls.....	9
Cabinet Assembly.....	10-11
Accessories - Cabinet.....	12
Accessories - Service & Maintenance Tools.....	13-14
Accessories - Boiler.....	15
Accessories - Tanks.....	16
Accessories - Tank Mount Kits & Tank Accessories.....	17
Accessories - Miscellaneous.....	18
Accessories - Fuel Delivery Accessories.....	19-20
Accessories - Fuel Transfer Systems.....	21-22
Accessories - Flue Kits & Flue Material.....	23-25
Notes (blank page for customer notes).....	26

## Using this Catalog

To use this catalog, follow these easy steps:

1. Determine what Assembly or Component you wish to order.
2. Reference the Table of Contents above to determine the page the part is located on.
3. Use the exploded views to locate the part Item Number, then cross reference the number in the table.

-or-

Scan through the tables and use any of the information provided to locate the part.

Note: Drawings are not to scale.

### General Information

- All content in this catalog is subject to change without notice.
- EnergyLogic is abbreviated as EL. "Our" refers to EnergyLogic. "You" and "your" refer to the Dealer, Reseller and Authorized Service Provider.

### Product and Price Information

1. Prices, specifications and availability of products are subject to change without notice.
2. Prices do not include charges for shipping, handling and applicable taxes.
3. Descriptions may not reflect current technical information.
4. Any typographical, photographic, drawing or specification error in products or pricing is subject to correction.
5. Products shown are not to scale.
6. Products may vary in appearance.
7. Prices listed in this catalog supersede any previous listings.
8. EL shall have the right to refuse or cancel any orders placed for any product listed at the incorrect price.
9. Promotional sales are not retroactive.
10. Advertising and selling parts over the internet is prohibited.
11. EL collects sales taxes for sales made to residents and businesses of the State of Tennessee, Wisconsin, Pennsylvania
12. Advertising and selling parts over the internet is prohibited.

### Parts Distribution

1. You will be given the responsibility of selling service parts to customers in your coverage area.
2. If a customer in your service area contacts EL to purchase parts, EL will refer them to you.
3. Once the customer contacts you, EL expects a follow up communication with that customer within 24 hours. EL strongly urges you to stock a detailed list of parts to quickly meet your customer's needs.
4. A Recommended Service Parts Stocking List and Consumable Parts List are available upon request.

## Placing Orders

1. Orders may be placed 24 hours a day via EL's Dealer Website or by contacting customer service at customerservice@energylogic.com. You may also send a fax order form or purchase order to 615-471-5202. A web-based or hardcopy Purchase Order is required for all orders.
2. If an order is placed via phone, EL will send an order confirmation to you to sign and return before processing will occur.
3. With respect to "small package items", if an item on a customer order is not available to ship at the customer's requested ship date because of a backorder or lead-time situation, EL will automatically split the order and ship what is available to ship at the customer request date, unless we receive written instructions on the customer PO to the contrary. We will not split an order for a customer with "Ship Complete" terms. The customer will be responsible for all freight charges on split orders.
4. With respect to "LTL items", if an item on a customer order is not available to ship at the customer's requested ship date because of a backorder or lead-time situation, EL will contact customer for confirmation as to whether we should split the order or not. We must receive written confirmation from the customer prior to splitting an order. The customer will be responsible for all freight charges on split orders.
5. "Small Package" orders requested for same day shipping must be specified for Air Freight and be received by 11AM CST in order to ship same day. Upon customer request, EL will make every effort to ship such order the same day, but cannot guarantee such.
6. Freight terms must be documented by a PO, a signed order confirmation or an e-mail/fax from the customer prior to shipping overnight orders.
7. Purchase orders will be limited to one revision within 24 hours of original order placement. Additional revisions will be entered as a separate order from original PO & subject to standard shipping charges.

## Terms

1. All orders are shipped F.O.B. EnergyLogic.
2. Payment terms may be granted to customers based on an evaluation of credit risk.
3. To retain payment terms, customer account must remain in good standing with payment received by the required due dates.
4. EnergyLogic may adjust or amend customer terms at its discretion, based on customer payment history or changes in credit risk.

## Shipping

1. Orders will be shipped within 72 business hours of your order if the order is received prior to 11:00 AM CST (*stocking orders may take longer*).
2. EL shall use commercially reasonable methods to ship parts.
3. Customer Pickup orders must be placed 24 hours in advance and specify a requested pick up date and time.

## Return Authorization

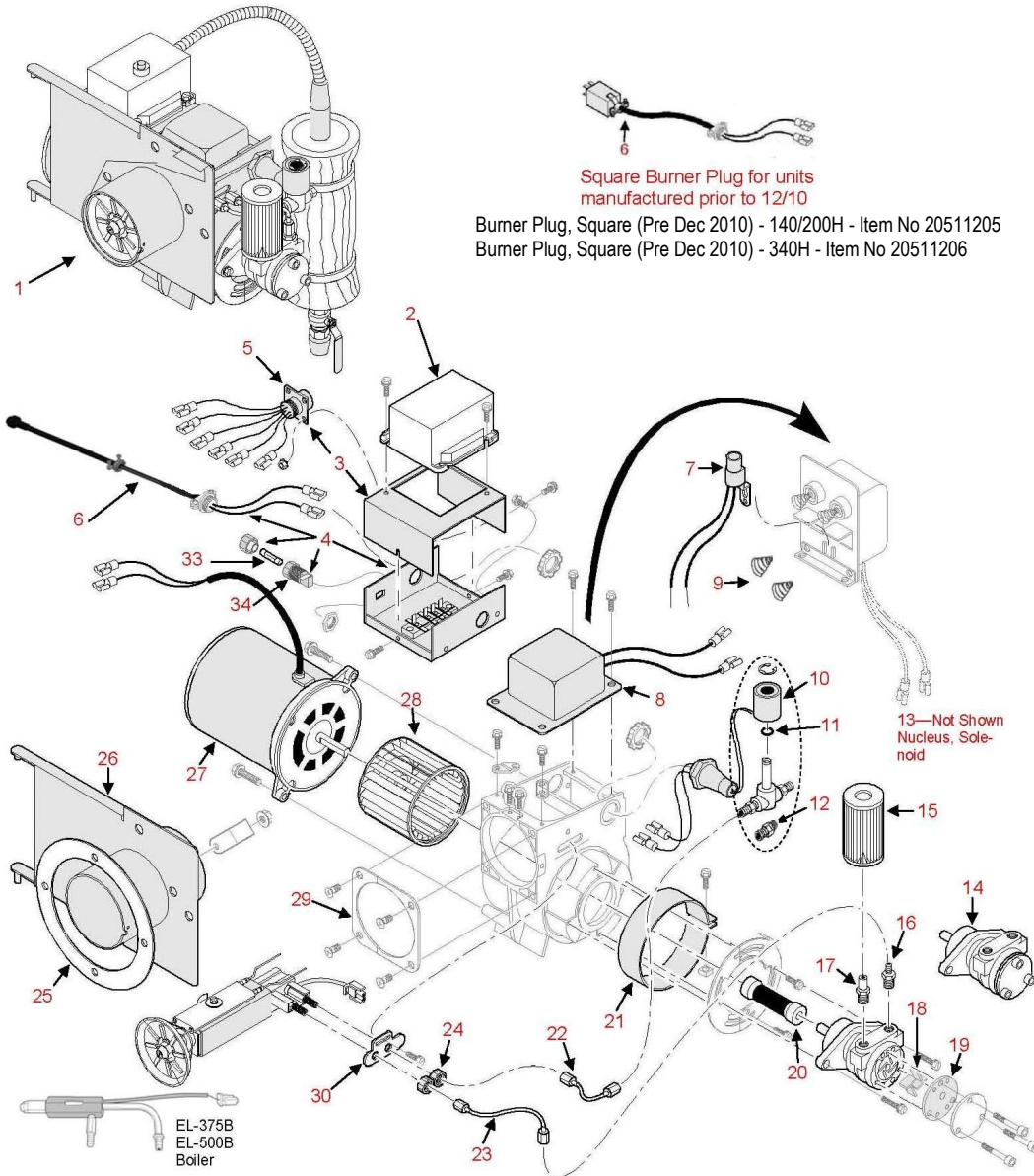
1. Prior to returning any part you must obtain a return authorization number (RAN).
2. EL shall have the right to deny any RAN request.
3. Parts returned without a RAN will not be accepted.
4. Warranty returns must be submitted within 30 days of service.
5. All return parts must be received within 30 days from RAN issue date or they will be denied.
6. All stock adjustments must be returned within one year from the date of purchase, in "new" condition without alteration and in original package.
7. Proof of Purchase may be required
8. Restocking Fee may apply.
9. EL shall at its discretion either: (a) request photos with authorization to scrap the part and issue credit, (b) require the part to be returned freight prepaid, with credit due upon receipt and evaluation, or (c) send a replacement part.
10. Parts received which are found not to be defective, not in new condition or over 30 days will be returned at customer's expense.

## Processing Credits

Credits will be processed within 30 days from our receipt of all the information required to process the credit. Credits will remain valid for 6 months from the date of issue.

## Parts Use Statement

When repairs are made within the Limited Warranty, only genuine EnergyLogic, LLC or EnergyLogic, LLC (EL) approved parts and accessories may be used. Parts and accessories advertised as being "the same" as parts required by EL, but not sold through EL, do not qualify for use in warranty repairs or any repairs paid for by EL. Parts not approved by EL may not have been validated, tested or certified for use. Non-approved parts or assemblies may result in a change to the unit's design characteristics and will affect its ability to conform to UL or NFPA guidelines. For this reason, EL disclaims all liability for loss or damage resulting from the use of non-approved parts or assemblies and the Limited Warranty of the unit containing such parts or assemblies is voided. EL parts installed onto a product not sold by EL do not conform to UL or NFPA guidelines. EL disclaims all liability for loss or damage resulting from such products and the Limited Warranty of such parts will be voided.



Square Burner Plug for units manufactured prior to 12/10

Burner Plug, Square (Pre Dec 2010) - 140/200H - Item No 20511205  
 Burner Plug, Square (Pre Dec 2010) - 340H - Item No 20511206

13—Not Shown Nucleus, Solenoid

EL-375B  
 EL-500B  
 Boiler

Large Air compressor with 1/4" output port  
 (Pre Sept 11, 2013)

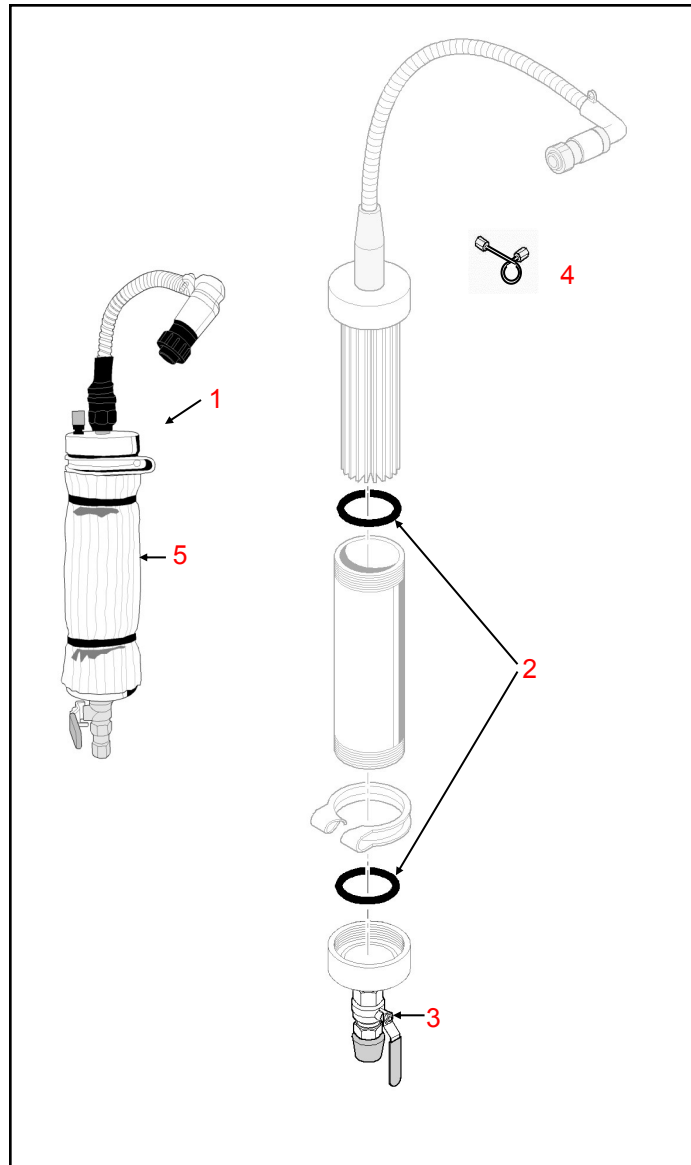
Small Air compressor no output port  
 (Sept 11, 2013 fwd)



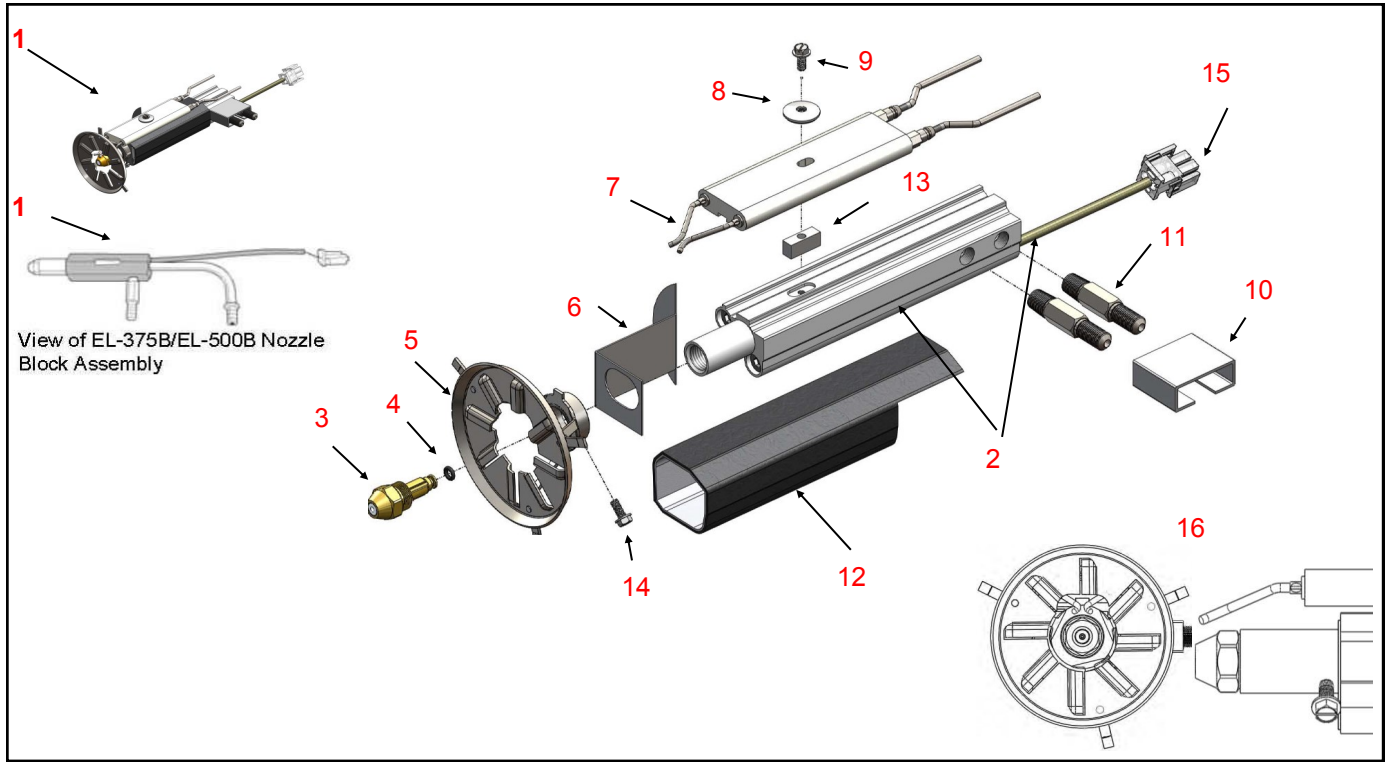
Ref.#	Part Description	140H	200H	340H	350H	200B	375B	500B	Number
1	Burner - 140H w/Preheater round plug	x							04000081
1	Burner - 140H w/Preheater square plug	x							04000081-SP
1	Burner - 200H w/Preheater round plug		x						04000082
1	Burner - 200H w/Preheater square plug		x						04000082-SP
1	Burner - 350H w/Preheater round plug			x	x				04000227
1	Burner - 350H w/Preheater square plug			x	x				04000227-SP
1	Burner - 200B w/Preheater					x			13010101
1	Burner - 375B <b>no</b> Preheater						x		13010100
1	Burner - 500B <b>no</b> Preheater							x	13010102
2	Control - Primary, Carlin 30 Second	x	x	x	x	x			05000135
2	Control - Primary, 15 Second						x	x	06001027
3	Wire Box Cover Assembly	x	x	x	x				14010112
4	Wire Box Base Assembly, Round plug	x	x						04000106
4	Wire Box Base Assembly, Round plug			x	x				04000107
4	Wire Box Base Assembly					x	x	x	14010109

BURNER ASSEMBLY		Current Models							Item
Ref.#	Part Description	140H	200H	340H	350H	200B	375B	500B	Number
5	Preheater Wiring Pigtail (6 pin)	x	x	x	x	x	x	x	20541310
5	Preheater Wiring Pigtail (7 pin)						x	x	14010121
6	Burner cord w/Round plug (12/10 Fwd), 9"	x	x						04000111
6	Burner cord w/Round plug (12/10 Fwd), 12"			x	x				04000112
6	Burner cord w/Square plug	x	x						20511205
6	Burner cord w/Square plug			x	x				20511206
7	Detector - Cad Cell	x	x	x	x	x	x	x	20210110
8	Transformer - Ignition	x	x		x	x			20213137
8	Transformer - Ignition			x			x	x	20213145
9	Spring—Transformer	x	x	x	x	x	x	x	20213138
10	Valve - Solenoid w/Fittings	x	x	x	x	x	x	x	14010134
11	O-Ring - Solenoid Valve	x	x	x	x	x	x	x	20293199
12	Fitting—Solenoid Valve	x	x	x	x	x	x	x	20491154
13*	Nucleus-Solenoid Valve w/Spring	x	x	x	x	x	x	x	20293198
14	Air Compressor (Lg prior to 9/11/13)	x	x	x	x	x	x	x	20210111
14	Air Compressor (Sm beginning 9/11/13)	x	x		x	x			06000807
14	Air Compressor Kit, (Sm w/ fittings)	x	x						05000167
14	Air Compressor Kit, (Sm w/ fittings)				x				05000168
15	Filter - Air Compressor	x	x	x	x	x	x	x	20210112
15	Filter - Air Compressor (6 Pk)	x	x	x	x	x	x	x	05000037
16	Union - 3/16FLx1/4MIP, .0645" (Lg AC)	x	x			x			14610010
16	Union - 3/16FLx1/4MIP, .052" (Lg AC)			x	x				14610005
16	Union - 3/16FLx1/4 MIP, .028" (Lg AC)						x	x	14610001
16	Union - 3/16FLx1/8 MIP, .042" (SM AC)	x	x			x			04000300
16	Union - 3/16FLx1/8 MIP (SM AC)				x				06000024
17	Coupler - Air Comp Filter 1/4" (Lg AC)	x	x	x	x	x	x	x	20411121
17	Coupler - Air Comp Filter 1/8" (Sm AC)	x	x		x	x			06000794
18	Vanes - Air Compressor, Lg (4 Pk) prior to 9/11/13	x	x	x		x	x	x	06000519
18	Vanes - Air Compressor, Sm (4 Pk) Current	x	x		x	x			06000821
19	Plate - Carbon End	x	x	x	x	x	x	x	20213143
20	Coupling - Compressor to Burner	x	x	x	x	x	x	x	20210122
21	Band - Air, AF	x	x			x			20213132
21	Band - Air, SF			x			x	x	20213133
21	Band - Air, Slotted				x				06000595
22	Copper Line - S-NB	x	x		x	x			05000038
22	Copper Line - S-NB			x					05000039
22	Copper Line - S-NB						x	x	05000040
23	Copper Line - AC-NB	x	x	x	x	x	x	x	20630115
24	Nut - Knurled 3/8-24	x	x	x	x	x	x	x	20410110
25	Gasket - Burner Klinger	x	x	x	x				20910103
25	Gasket - Flange					x	x	x	20210121
26	Air Tube - Hinged	x	x						20311116
26	Air Tube - Hinged, Diameter 4.3			x	x				04000062
26	*Air Tube - Non-Hinged					x			20210119
26	*Air Tube - Non-Hinged						x	x	20361187
27	Motor - 1/5HP Burner AF (prior to 9/11/13)	x	x			x			20213139
27	Motor - 1/4HP Burner SF			x			x	x	20213147
27	*Motor - 1/7HP Carlin, AF (current)	x	x		x	x			06000825
28	Wheel - Burner Blower, AF	x	x		x	x			20213140
28	Wheel - Burner Blower, SF			x			x	x	20210117
29	Flange - Burner Sq Plate AF/SF	x	x	x	x	x	x	x	20213136
30	Escutcheon Plate (2 hole)	x	x		x	x			20213148
30	Escutcheon Plate (1 hole)			x			x	x	20213153
31	* Relay - Burner (500)						x	x	06000475
32	* Flange - 4" Mounting Kit					x	x	x	20210120
33	Fuse, 8 AMP	x	x	x		x	x	x	20510113
34	Fuse Holder	x	x	x		x	x	x	20510112
35	Screw - Air Compressor Mtng 1/4-20X1	x	x	x		x	x	x	20410106

# Preheater Assembly

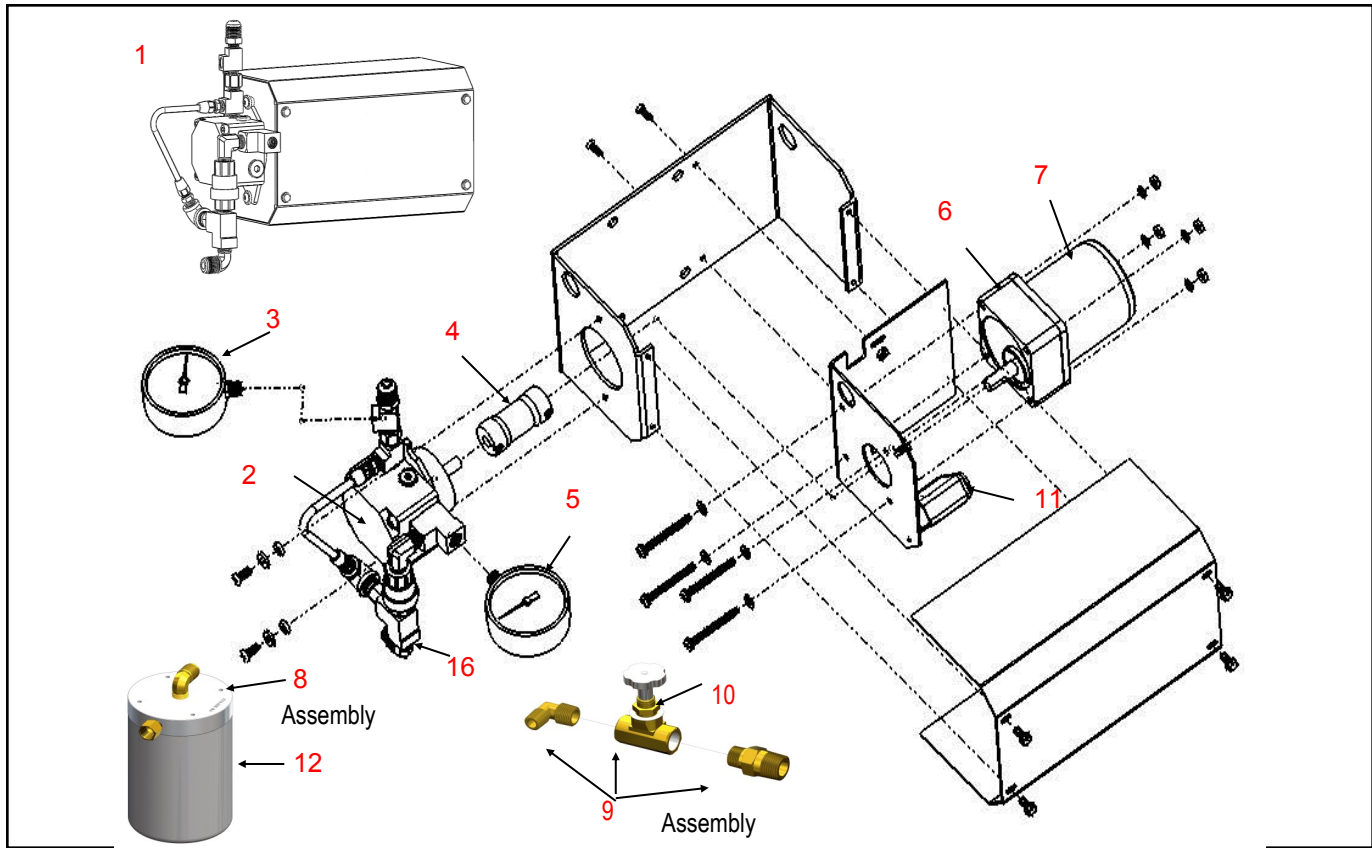


PREHEATER ASSEMBLY * Not Pictured		Current Models							Item Number
Ref.#	Part Description	140H	200H	340H	350H	200B	375B	500B	
1	Preheater Assembly - 140H	x							14040187
1	Preheater Assembly - 200H		x						14040188
1	Preheater Assembly - 340H/350H			x	x				14040189
1	Preheater Assembly - 200B					x			14040192
1	Preheater Assembly - 375B						x		14040193
1	Preheater Assembly - 500B							x	14040190
2	Gasket - Preheater 2-5/8 O.D.	x	x	x	x	x	x	x	20940122
3	Valve - 1/4 NPT, Shutoff	x	x	x	x	x	x	x	06000074
4	Copper Line - SV-PH	x	x	x	x				05000044
4	Copper Line - SV-PH					x			05000045
5	Insulation - Kit, Preheater Foil	x	x			x			05000046
5	Insulation - Kit, Preheater Foil			x	x				05000047
5	Insulation - Kit, Preheater Foil						x	x	05000048
6	*Bolt - Preheater Mntg , 1/4-20 x 3 3/4"	x	x		x	x			20410120
6	*Bolt - Preheater Mntg , 5/16-18 x 3 1/2"			x			x	x	20440156
7	*Valve, Solenoid no fittings						x	x	20290197



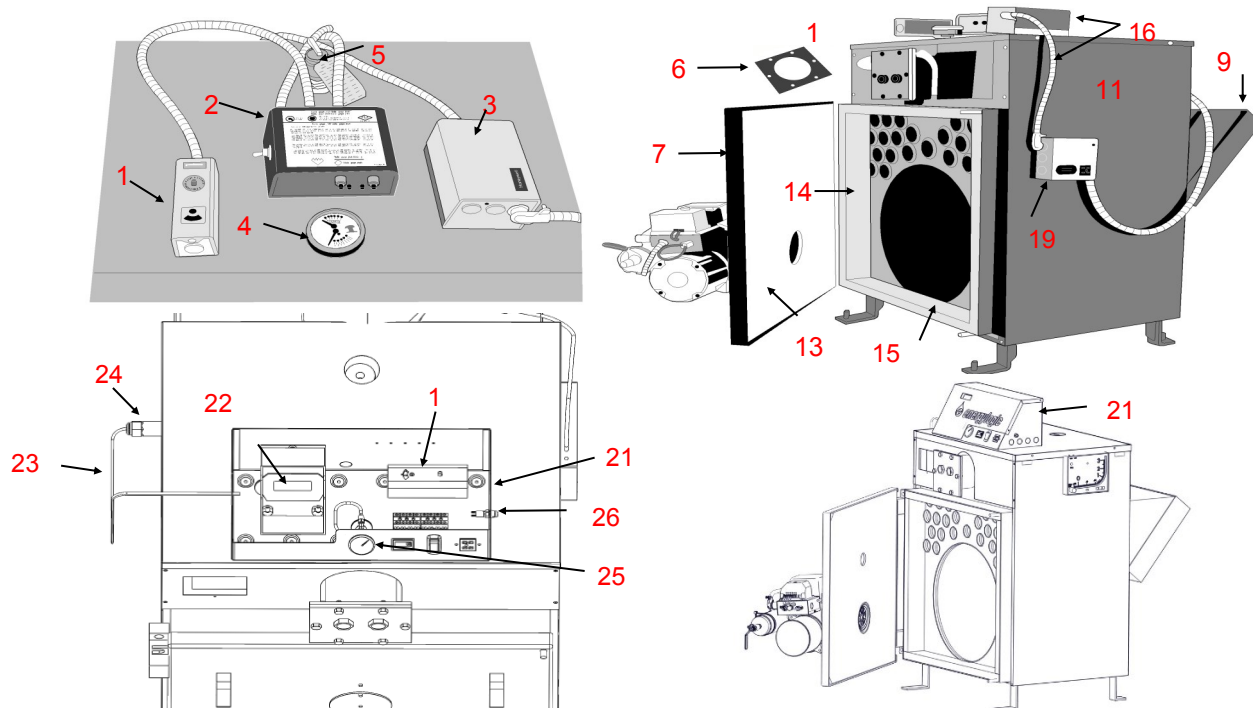
NOZZLE LINE ASSEMBLY * Not Pictured		Current Models							Item
Ref.#	Part Description	140H	200H	340H	350H	200B	375B	500B	Number
1	Nozzle Line Assembly	x	x			x			14010124
1	Nozzle Line Assembly			x	x				04000230
1	Nozzle Line Assembly						x	x	14010127
2	Nozzle Block Assembly, w/ PTC	x	x	x	x	x			04000056
2	Nozzle Block Assembly, w/PTC						x	x	04000057
3	Nozzle - #5	x	x			x			20210123
3	Nozzle - #5 (50 Pk)	x	x			x			14013152
3	Nozzle - #28			x	x		x	x	20210124
3	Nozzle - #28 (50 Pk)			x	x		x	x	14013151
4	O-Ring - Nozzle	x	x	x	x	x	x	x	20213152
5	Head - Flame Retention	x	x			x			04000280
5	Head - Flame Retention			x	x		x	x	04000260
6	Air Vane	x	x	x	x	x			20311126
6	Air Vane						x	x	20311121
7	Electrode - single bend (5 Pk)	x	x	x	x	x			05000049
7	Electrode - single bend (beginning 9/11/13)	x	x	x	x	x			06000593
7	Electrode - single bend (beginning 9/11/13)						x	x	06000741
8	Washer - 8 x 3/4, Electrode	x	x	x	x	x	x	x	20410115
9	Screw - 8-32 x 7/8 Hex	x	x	x	x	x	x	x	20410114
10	Bracket-Nozzle Block Centering	x	x	x	x	x			20311117
11	Fitting - Oil/Air Bulkhead	x	x	x	x	x	x	x	20411122
12	Sleeving	x	x	x	x	x			20990149
13	Key - Mount, Extr Nozzle Block	x	x	x	x	x			20311130
14	Screw - 8-32 x 3/8	x	x	x	x	x	x	x	20410117
15	PTC Assembly, Extruded Block 8.7mm	x	x	x	x	x			14010125
15	PTC Assembly, Hex Block 6.5mm						x	x	14013211
16	Kit, electrode&FRH 140/200H,200B	x	x			x			05000162
16	Kit, electrode&FRH 340H			x	x				05000163
16	Kit, electrode&FRH 375, 500						x	x	05000164
17	*Nozzle Block Pigtail Assembly	x	x	x	x	x			14010126

# Fuel Pump Assembly



PUMP ASSEMBLY		* Not Pictured		Current Models								Item
Ref.#	Part Description	140H	200H	340H	350H	200B	375B	500B		Number		
1	Pump Assembly, 140H	x								14020300		
1	Pump Assembly, 200H		x							14020301		
1	Pump Assembly, 340H/350H			x	x					04000289		
1	Pump Assembly, 200B					x				14020304		
1	Pump Assembly, 375B						x			14020305		
1	Pump Assembly, 500B							x		14020306		
2	Pump w/Fittings	x	x	x	x	x	x			14020155		
2	Pump w/Fittings & solenoid valve							x		04000055		
3	Gauge - 0-160 PSI Pressure, 1/8"	x	x	x	x	x	x	x		20270183		
4	Coupling - Pump to Motor	x	x	x	x	x	x	x		20220158		
5	Gauge - Vac/Pressure Combo 1/4"	x	x	x	x	x	x	x		20270188		
6	Motor w/Gear Box, 140H (after March 2013)	x								05000155		
6	Motor w/Gear Box, 200H/200B (after March 2013)		x			x				05000156		
6	Motor w/Gear Box, 340H/350H			x	x					05000158		
6	Gear Box, Oriental 3GN3KA						x			20220195		
6	Gear Box, Oriental 3GN9KA							x		20220156		
7	Motor w/Capacitor 3IK15GN-AWU						x	x		20220155		
8	Filter Head Assembly w/Filter	x	x	x	x	x	x	x		04000068		
8	Filter Head Assembly w/o Filter	x	x	x	x	x	x	x		04000189		
9	Firestop Valve Assembly	x	x	x	x	x	x	x		04000067		
10	Firestop Valve	x	x	x	x	x	x	x		20270186		
11	Capacitor (Oriental motor only)						x	x		20223198		
11	Capacitor (ZD motor only)	x	x	x	x	x				06000842		
12	Filter - SS - Spin-On, 5 in.	x	x	x	x	x	x	x		20270185		
13	*Filter - SS Spin-On, 5 in. (12 Pack)	x	x	x	x	x	x	x		05000052		
14	*Filter - SS - Spin-On, 8 in.	x	x	x	x	x	x	x		20203106		
15	*Solenoid Valve (no fittings)						x	x		20290197		
16	Valve, 1/4" Check	x	x	x	x	x	x	x		20220153		
17	Valve, Relief 50 PSI, 1/8"	x	x	x	x	x	x	x		06000958		
	*Retrofit Relief Valve Kit, 1/4" to 1/8"	x	x	x	x	x	x	x		05000197		
18	* O-ring, Danfoss Pump	x	x	x	x	x	x			20923152		
19	*Motor/Gearbox/Coupling/Housing Kit	x								04000293		
19	*Motor/Gearbox/Coupling/Housing Kit		x							04000294		
19	*Motor/Gearbox/Pump Housing Kit			x						04000295		
20	*Adhesive/Gasket Sealant #2	x	x	x	x	x	x	x		30963113		





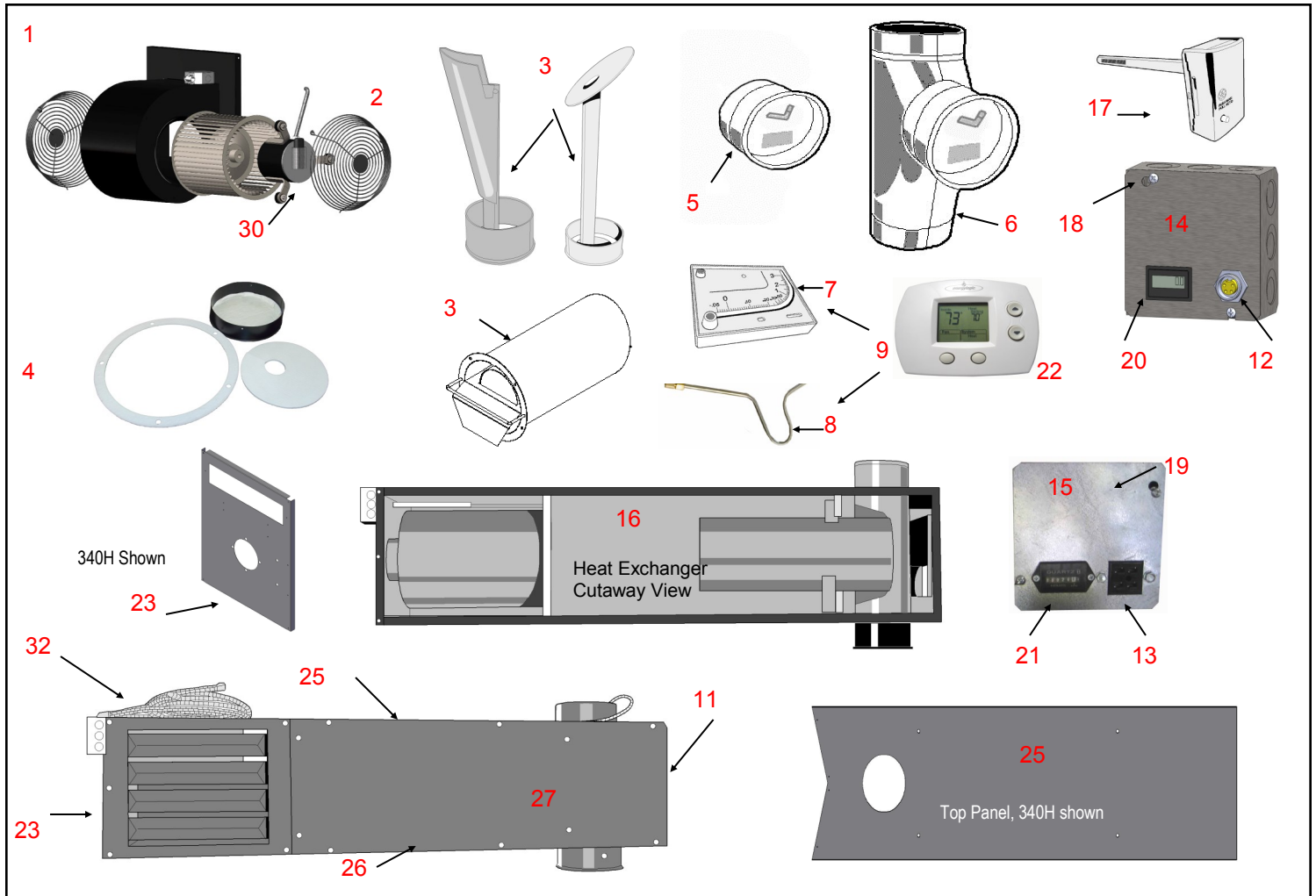
Boiler Vessel w/Controls

BOILER ASSEMBLY		* Not Pictured			Item
Ref.#	Part Description	200B	375B	500B	Number
1	Aquastat—High Limit Temp Cut-off	x	x	x	06000134
2	Control—Low Water	x	x	x	20263180
3	Aquastat—Triple	x	x	x	20263179
4	Gauge - Boiler Temp/Pressure (°F/°C)	x	x	x	20270302
5	Valve - Pressure Relief, 30 PSI	x	x	x	20663146
6	Gasket - Boiler Coil	x	x	x	20363219
7	Door w/ Insulation	x	x	x	20363228
9	Gasket Rope - Breech 1/2"	x	x	x	05000055
10	Coil Plate	x	x	x	20363218
12	*Grease - Heat Conductive	x	x	x	20260190
13	Insulation - Door 26 1/2" x 26 3/4"	x	x	x	20963132
14	Insulation-Left/Right-24 1/8" x 4" x 1 1/4"			x	20963142
14	Insulation - Left/Right - 24 1/8" x 3" x 1 1/4"	x	x		20963130
15	Insulation - Top/Bottom - 26 1/4" x 3" x 1"	x	x		20963131
15	Insulation-Top/Bottom-26 1/4" x 4" x 1"			x	20963143
16	Wire Harness Assembly - Boiler	x	x	x	14010117
17	*High Temp Adhesive	x	x	x	30990103
18	*Boiler Burner Plug Assembly	x	x	x	14010139
19	Wiring Box Assembly	x	x	x	14030179
20	*Baffle, Plate		x	x	06000290
21	Boiler Control Box Assembly	x	x	x	04000312
22	Control, Aquasmart	x	x	x	06000818
23	Sensor, Aquasmart	x	x	x	06000819
24	Thermowell, Aquasmart	x	x	x	06000864
25	Gauge - Pressure, Aquasmart	x	x	x	06000835
26	*Fuse—Fast Acting, 20A, 250V	x	x	x	06000837
	*Switch, Rocker, 20A	x	x	x	06000836

≈ Wire harness includes items 1,2,3,19

**Special Note:** 495B boiler— used same burner/preheater/fuel pump/controls as the 500B. Contact EL Customer Service or Technical Support for price & availability of unique parts (insulation).

# Cabinet Assembly



CABINET ASSEMBLY		* Not Pictured		Current Models					Item
Ref.#	Part Description	140H	200H	340H	350H	200B	375B	500B	Number
1	Blower - Assembly 1/2 HP, 140H	x							13031001
1	Blower - Assembly 1/2 HP, 200H		x						13031002
1	Blower - Assembly 3/4 HP, 340H			x					13031003
1	Blower - Assembly 1HP, 350H				x				04000229
30	Wheel - Blower 9 inch OD, 140H	x							06000039
30	Wheel - Blower 10 inch OD, 200H/340H		x	x					20200200
30	Wheel - Blower 12.5 inch OD, 350H				x				06000592
2	Guard - Blower Fan	x	x	x	x				20303110
3	Baffle w/ Drip Cap, 1 Piece 140/200	x	x						20333158
3	Baffle w/ Drip Cap, 1 Piece 340 only			x					20331136
3	Baffle Assembly 350 only				x				04000219
3	Baffle Assembly 350 Canadian only				x				04000220
4	* Drip Cap with gasket, no baffle				x				04000218
4	Gasket - baffle				x				06000584
4	*Gasket - Drip Cap	x	x	x	x				20933118
5	Damper - 7 Inch Barometric	x	x	x	x	x	x		20770110
5	Damper - 7 Inch Barometric, Stainless Steel	x	x	x	x	x	x		20770110—SS
5	Damper - 9 Inch Barometric							x	20770112
5	Damper - 8 Inch Barometric, DW T	x	x	x		x	x		20770109
6	Tee - Barometric & Damper 8", Stainless Steel	x	x	x	x	x	x		04000045
6	Tee - Barometric & Damper 10"							x	14070199
7	Gauge - Draft (Manometer)	x	x	x	x	x	x	x	20270184
8	Draft Gauge Probe Kit	x	x	x	x	x	x	x	14003110
9	Draft Gauge Assembly	x	x	x	x	x	x	x	14070198
10	* Oil - Draft Gauge	x	x	x	x	x	x	x	20273189

CABINET ASSEMBLY		* Not Pictured							Current Models							Item
Item	Part Description	140H	200H	340H	350H	200B	375B	500B	140H	200H	340H	350H	200B	375B	500B	Number
11	Cabinet Assembly w/harness, serialized			x											04000089	
11	Cabinet Assembly				x										04000224	
12	Receptacle Rnd - Burner Wiring (12/10 Fwd)	x	x	x	x										06000221	
13	Receptacle Square - Burner Wiring					x	x	x							20530138	
14	Wiring Box Asmbly - Rnd Plug (12/10 Fwd)	x	x	x	x										04000108	
15	Wiring Box Assembly - Square Plug	x	x	x											14030160	
16	Heat Exchanger Assembly w/Drip Cap	x													05000065	
16	Heat Exchanger Assembly w/Drip Cap		x												05000066	
17	Switch - Fan/Limit, 11 Inch	x	x	x	x										20230165	
18	Cover Plate - Wiring Box, Rnd Plug	x	x	x		x	x	x							06000216	
19	Cover - Wiring Box, Square Plug	x	x	x	x	x	x	x							14033208	
20	Hour Meter - Digital	x	x	x	x	x	x	x							06000224	
21	Hour Meter - Analog	x	x	x		x	x	x							20230166	
22	Thermostat - Wall, Programmable	x	x	x	x	x	x	x							20230178	
23	* Panel - Cabinet, Burner	x	x												20331150	
23	Panel - Cabinet, Burner, 340H			x											20331153	
23	* Panel - Cabinet, Burner, 350H				x										06000572	
24	* Panel - Cabinet, Filler	x	x		x										20331146	
24	* Panel - Cabinet, Filler			x											20233171	
25	* Panel - Cabinet, Top	x													20331148	
25	* Panel - Cabinet, Top		x												20331156	
25	Panel - Cap, Top			x											20331147	
25	* Panel - Cap, Top/Bottom				x										06000575	
26	* Panel - Cabinet, Bottom	x													20331152	
26	* Panel - Cabinet, Bottom		x												20331155	
26	* Panel - Cabinet, Bottom			x											20331145	
27	Panel - Cabinet, Side	x													20331144	
27	Panel - Cabinet, Side		x												20331154	
28	* Panel - Cabinet, Left Side			x											20331149	
28	* Panel - Cabinet, Right Side			x											20331151	
29	*Panel - Cabinet, End "V"			x											20331198	
30	* Motor - 1/2 HP Blower w/capacitor	x	x												05000152	
30	* Motor - 3/4 HP Blower w/capacitor			x											05000153	
30	* Motor - 1 HP Blower w/capacitor (GE)				x										05000154	
31	*Capacitor - 7mfd, 1/3 HP Blower	x													20231171	
31	*Capacitor - 10mfd, 1/2 HP Blower		x												20231172	
31	*Capacitor - 15mfd, 3/4 HP Blower			x											20231173	
31	*Capacitor - 20mfd, 1 HP Blower				x										06000636	
32	*Wire Harness w/Round Plug (12/10 Fwd)	x	x		x										04000071	
32	*Wire Harness w/Round Plug (12/10 Fwd)			x											04000072	
33	*T/Stat Wire Assembly	x	x	x	x	x	x	x							20511311	
34	*Gasket, ERU Cover			x											05000068	
35	*Blower Motor Mount Replacement Kit		x	x											05000159	
35	*Blower Motor Mount Replacement Kit				x										06000633	
35	*Blower Motor Mount Replacement Kit	x													05000191	

Part Description	Current Models							Item Number
	140H	200H	340H	350H	200B	375B	500B	
Bracket - Furnace Wall Mount (pair)	x	x	x	x				05000087



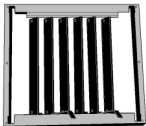
The furnace wall brackets provide a support structure for mounting the furnace to a wall.

Part Description	Current Models							Item Number
	140H	200H	340H	350H	200B	375B	500B	
Louver - Standard	x	x		x				20331138



A Standard Louver can be added to the furnace to allow air dispersion from both sides when the furnace is ceiling mounted.

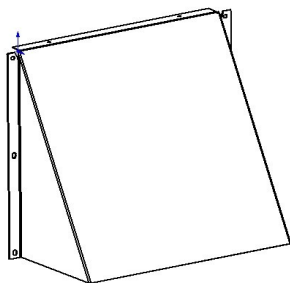
Part Description	Current Models							Item Number
	140H	200H	340H	350H	200B	375B	500B	
Louver - Multi-Direct	x	x		x				20331142



A Multi-Directional Louver allows the operator to direct and spread the heated air to a more beneficial location.  
Note: must be used in conjunction with standard louvers.

Part Description	Current Models							Item Number
	140H	200H	340H	350H	200B	375B	500B	
DownFlow Vent	x	x		x				06000440

The Down Flow Vent directs heated air downward toward the shop floor, & is effective up to 20 feet above the desired heating area. It's perfect for facilities with high ceilings where the furnace is mounted above 12 feet.

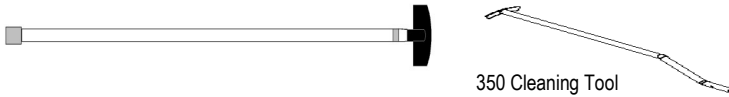


Part Description	Current Models							Item Number
	140H	200H	340H	350H	200B	375B	500B	
Combustion Analyzer/Manometer, Printer	x	x	x	x	x	x	x	20203111
*Filter- Combustion Analyzer (5 Pack)	x	x	x	x	x	x	x	20203116
*Filter Assy-Combustion Anlz (Mini Pump)	x	x	x	x	x	x	x	20203117
*Filter-Combustion Analyzer (Oil)	x	x	x	x	x	x	x	20203118



The Combustion Analyzer Kit is used to obtain furnace and boiler exhaust gas readings (for example CO<sub>2</sub>, CO O<sub>2</sub>), over fire pressure, draft and smoke spot. The kit comes complete with printer so you can print a copy for your customers. Enhance your professional services with the right tools.

Part Description	Current Models							Item Number	Price
	140H	200H	340H	350H	200B	375B	500B		
Cleaning Tool with extension pole	x	x	x	x	x	x	x		
Cleaning Tool with extension pole				x					



350 Cleaning Tool

The che mo reach throughout each furnace's heat exchanger.

Part Description	Current Models							Item Number
	140H	200H	340H	350H	200B	375B	500B	
*Boiler Brush Tube-1.75" x 1/4 NPT					x			20092104
*Boiler Brush Tube-2.00" x 1/4 NPT						x	x	20092106
*Boiler Brush Tube Kit—1.75" and 2.00"					x	x	x	05000069



Clean ash from boiler tubes using the Boiler brushes specifically designed for EnergyLogic boilers. The kit comes with both sizes.

Part Description	Current Models							Item Number
	140H	200H	340H	350H	200B	375B	500B	
Extension Rod T Handle	x	x	x	x	x	x	x	20092112
Extension Rod 4' x 1/4" NPT	x	x	x	x	x	x	x	20092114
Extension Rod 6' x 1/4" NPT	x	x	x	x	x	x	x	20092116



Extension rods and handles to go with flue and boiler brushes.

Part Description	Current Models							Item Number
	140H	200H	340H	350H	200B	375B	500B	
Boiler Brush Kit					x			05000189
Boiler Brush Kit						x	x	05000190



Kit includes a rod, brush and handle.

Part Description	Current Models							Item Number
	140H	200H	340H	350H	200B	375B	500B	
*Flue Brush-6" x 1/4 NPT	x	x			x			06000084
*Flue Brush-8" x 1/4 NPT	x	x	x	x	x	x		20092100
*Flue Brush-10" x 1/4 NPT							x	20092102
*Flue Brush Kit—6", 8" and 10"	x	x	x	x	x	x	x	05000070



The brushes are carefully selected to perform the most common flue / chimney cleaning. Purchase individually or as a kit which comes with all 3 brushes.

Part Description	Current Models							Item Number
	140H	200H	340H	350H	200B	375B	500B	
Burner Brush Kit (includes all pictured)	x	x	x	x	x	x	x	05000071
Burner Pick Hand Tool - A	x	x	x	x	x	x	x	20092122
Fine Wire Hand Scratch Brush - B	x	x	x	x	x	x	x	20092118
Parts Cleaning Brush - C	x	x	x	x	x	x	x	20092120
Pipe Brush 0.200 - D	x	x	x	x	x	x	x	20092108
Pipe Brush 3/8 - E	x	x	x	x	x	x	x	20092110

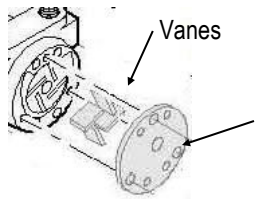


Burner Brush Kit includes all pictured or available for purchase separately.

- A. Pick Hand Tools—set of four (remove o-rings, clean threads and small orifices)
- B. Parts Cleaning Brush (clean painted components)
- C. Fine Wire Hand Scratch Brush (clean pre-heater cap, external nozzle block, burner blower wheel and unpainted components)
- D. 3/16" Pipe Brush (clean nozzle block)
- E. 3/8" Brush (clean solenoid valve)

# Service & Maintenance Tools cont'd

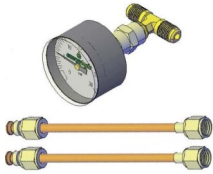
Part Description	Current Models							Item
	140H	200H	340H	350H	200B	375B	500B	Number
Kit - Maintenance, Air Comp.(Pre 9/11/13)	x	x	x	x	x	x	x	05000096
Kit - Maintenance, Air Comp.(Post 9/11/13)	x	x		x				05000166



The Air Compressor Maintenance kit comes with 4 replacement vanes and the carbon end plate.

Carbon End Plate

Part Description	Current Models							Item
	140H	200H	340H	350H	200B	375B	500B	Number
Kit - Gauge, Air CompTest	x	x	x	x	x	x	x	05000092
Replacement Gauge - Silencer Kit	x	x	x	x	x	x	x	20270300



An Air Compressor Test Gauge is used to check the output pressure of the air compressor during burner operation.

* Not Pictured	Current Models							Item
Part Description	140H	200H	340H	350H	200B	375B	500B	Number
Kit - Maintenance, 140H/200H	x	x						05000027
Kit - Maintenance, 340H/350H			x	x				05000028
*Kit - Maintenance, 340H/350H 8" Filter			x	x				05000031

The maintenance kit provides all the necessary service parts to install into the unit once ash is removed from the heat exchanger, the burner assembly is disassembled and the components are cleaned.



Furnace Maintenance Kit includes:

- 1 Air Compressor Filter
- 1 Solenoid Valve O-ring
- 2 Preheater Gaskets (2 5/8)
- 1 Drip Cap Gasket
- 1 5" Spin-on, Stainless Steel Mesh Filter
- 1 Burner Gasket
- 1 Nozzle

* Not Pictured	Current Models							Item
Part Description	140H	200H	340H	350H	200B	375B	500B	Number
Kit - Maintenance, 140H/200H w/silencer filter	x	x						04000251
Kit - Maintenance, 340H/350H w/silencer filter			x	x				04000252
*Kit - Maintenance, Lg Filter w/silencer filter			x	x				04000255
Filter, Silencer Air Compressor	x	x	x	x	x	x	x	06000150



\*AC Silencer Filter

The maintenance kit provides all the necessary service parts to install into the unit once ash is removed from the heat exchanger, the burner assembly is disassembled and the components are cleaned.

Furnace Maintenance Kit includes:

- 1 Air Compressor Silencer Filter \*
- 1 Solenoid Valve O-ring
- 2 Preheater Gaskets (2 5/8)
- 1 Drip Cap Gasket
- 1 5" Spin-on, Stainless Steel Mesh Filter
- 1 Burner Gasket
- 1 Nozzle

* Not Pictured	Current Models							Item
Part Description	140H	200H	340H	350H	200B	375B	500B	Number
Spin-On Filter - 5"	x	x	x	x	x	x	x	20270185
Spin-On Filter - 5" (12-Pack)	x	x	x	x	x	x	x	05000052
*Spin-On Filter - 8"	x	x	x	x	x	x	x	20203106

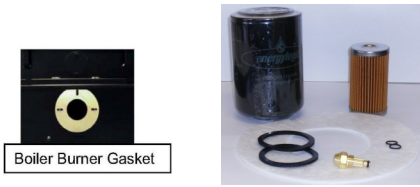
5" or 8" spin on filters may be used with the EnergyLogic filter head assembly (standard with every unit).



5" Filter

Part Description	Current Models							Item Number
	140H	200H	340H	350H	200B	375B	500B	
Kit - Maintenance, Boiler					x			05000029
Kit - Maintenance, Boiler						x	x	05000030

The maintenance kit provides all the necessary service parts to install into the unit once ash is removed from the heat exchanger, the burner assembly is disassembled and the components are cleaned.

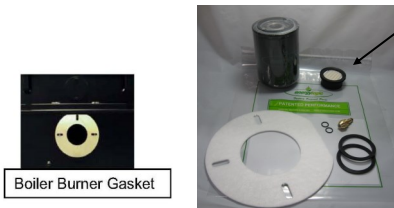


Boiler Maintenance Kit includes:

- 1 Air Compressor Filter
- 2 Solenoid Valve O-ring
- 2 Preheater Gaskets (2 5/8)
- 1 Spin-on, Stainless Steel Mesh Filter
- 1 Boiler Burner Gasket
- 1 Nozzle

Part Description	Current Models							Item Number
	140H	200H	340H	350H	200B	375B	500B	
Kit - Maintenance, Boiler w/silencer filter					x			04000253
Kit - Maintenance, Boiler w/silencer filter						x	x	04000254

The maintenance kit provides all the necessary service parts to install into the unit once ash is removed from the heat exchanger, the burner assembly is disassembled and the components are cleaned.



AC Silencer Filter

Boiler Maintenance Kit includes:

- 1 Air Compressor Silencer Filter
- 2 Solenoid Valve O-ring
- 2 Preheater Gaskets (2 5/8)
- 1 Spin-on, Stainless Steel Mesh Filter
- 1 Boiler Burner Gasket
- 1 Nozzle

Part Description	Current Models							Item Number
	140H	200H	340H	350H	200B	375B	500B	
Kit - Boiler Mixing Valve - 1 inch					x	x		05000072



Mixing Valve Kit for 140B, 200B and 375B—insures correct return water temperature to boiler is 140 degrees.

- Included in kit:
- 1" 3-way thermostatic mixing valve
  - Temperature / Pressure Gauges (2)
  - Instructions (loop diagram and flow curves)

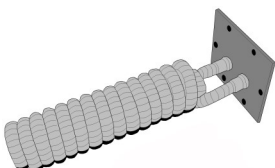
Part Description	Current Models							Item Number
	140H	200H	340H	350H	200B	375B	500B	
Kit - Boiler Mixing Valve - 1.5 inch							x	05000073
Gauge, Temp/Pressure					x	x	x	20270302



Mixing Valve Kit for 500B—insures correct return water temperature to boiler is 140 degrees.

- Included in kit:
- 1.5" 3-way thermostatic mixing valve
  - Temperature / Pressure Gauges (2)
  - Instructions (loop diagram and flow curves)


Part Description	Current Models							Item Number
	140H	200H	340H	350H	200B	375B	500B	
Coil - Domestic, Hot Water, 4 GPM					x			20362189
Coil - Domestic, Hot Water, 6 GPM						x		20362188
Coil - Domestic, Hot Water, 8 GPM							x	20362190




Domestic Coils are used when the hydronic system requires an open-loop section where heated water is not returned to the closed-loop boiler system. For example, water is heated for washing cars at a carwash. The heated water will not be returned to the system but allowed to run into a drain.

Item			
Number	Model	Description	Weight
03250106	250SW	250 Gallon Single Wall Workbench Tank	355 lbs
03250106-CN	250SW	250 Gallon Single Wall Workbench Tank— <b>CANADIAN</b>	355lbs
03250208	250DW	250 Gallon Double Wall Workbench Tank	748 lbs



Single Wall




Double Wall

Standard 250 gallon tanks includes drain valve assembly and sight gauge.  
Meets NFPA 30.30A & 31 standards, UL 142 tested & listed.  
**\*Tank Mount Kit must be ordered separately.**


Dimensions  
Single Wall: 62" L x 31.9" W x 38"H  
Weight:355 lbs  
Double Wall: 65.3" L x 32.2 "W x 40.2 "H  
Weight:748 lbs

Item			
Number	Model	Description	Weight
03500109	500SW	500 Gallon Single Wall Workbench Tank	662 lbs
03500207	500DW	500 Gallon Double Wall Workbench Tank	1169 lbs



Single Wall



Double Wall

Standard 500 gallon tanks includes drain valve assembly and sight gauge.  
Meets NFPA 30.30A & 31 standards, UL 142 tested & listed.  
**\*Tank Mount Kit must be ordered separately.**

Dimensions  
Single Wall: 73.7" L x 42.5"W x 45.8"H  
Weight:662 lbs  
Double Wall: 89.3" L x 45.2"W x 38.8"H  
Weight:1,169 lbs

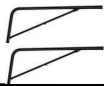


Part Description	Current Models							Item Number
	140H	200H	340H	350H	200B	375B	500B	
Tank Mount Kit - 2250/500 Tank	x	x						05000075
Copper Line, Pump to Preheater 8.5' - 250 Gallon	x	x						14070206



Tank Mount Kits include mounting tubes, furnace support arms, hardware, pump harness and discharge copper.

Part Description	Current Models							Item Number
	140H	200H	340H	350H	200B	375B	500B	
**Tank Mount Kit - 250/500 Gallon Tanks			x	x				05000076
Copper Line, Pump to Preheater 8.5' - 250 Gallon			x	x				14070206
Angle Brace (2 incl. in 0500076)			x	x				20352224



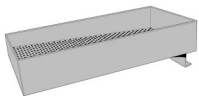
Tank Mount Kit includes furnace support arms, angle braces, hardware and discharge copper. For use with EnergyLogic 250 and 500 gallon workbench tanks.

Part Description	Current Models							Item Number
	140H	200H	340H	350H	200B	375B	500B	
Vent - 4 Inch Emergency Tank	x	x	x	x	x	x	x	20252174



Install into aboveground storage tanks as a code requirement to help prevent the tank from becoming over-pressurized and possible rupturing if ever exposed to fire.

Part Description	Current Models							Item Number
	140H	200H	340H	350H	200B	375B	500B	
Strainer Pan Assembly—10" x 20"	x	x	x	x	x	x	x	81010060



Used as a funnel for draining and screening used oil from filters or components into the storage tank.

Part Description	Current Models							Item Number
	140H	200H	340H	350H	200B	375B	500B	
Gauge - Tank, 24" 250 Gallon SW, 500 Gallon DW	x	x	x	x	x	x	x	20252140
Gauge - Tank, 30" 250 Gallon DW	x	x	x	x	x	x	x	20252142
Gauge - Tank, 36" 500 Gallon SW	x	x	x	x	x	x	x	06000728



The tank gauge is used to monitor the fuel level in the tank.

* Not Shown	Current Models							Item Number
Part Description	140H	200H	340H	350H	200B	375B	500B	
Switch-Low Fuel, 250 Gallon DW	x	x	x	x	x	x	x	14052236
Switch-Low Fuel, 26" 250 Gallon SW, 500 Gallon DW	x	x	x	x	x	x	x	14052234
Switch-Low Fuel, 35" 500 Gallon SW	x	x	x	x	x	x	x	04000379
*Switch-Low Fuel, Adjustustable up to 62"	x	x	x	x	x	x	x	14052235
Switch-Float, Replacement 12' Cord	x	x	x	x	x	x	x	06000532



Interrupts the operation of the unit when the fuel level is too low and prevents air and contaminants from entering the fuel system. Operates on the low voltage (24V) through the thermostat circuit.

* Not Shown	Current Models							Item Number
Part Description	140H	200H	340H	350H	200B	375B	500B	
Gauge Leak Detection, for Double Wall Tanks	x	x	x	x	x	x	x	06001084



* Not Shown	Current Models							Item Number
Part Description	140H	200H	340H	350H	200B	375B	500B	
Alarm Kit, Tank Overfill	x	x	x	x	x	x	x	05000193



Part Description	*Not Pictured	Current Models						Item Number	
		140H	200H	340H	350H	200B	375B		500B
*SmartStat Kit (Not Pictured)		x	x	x	x	x	x	x	05000136
SmartStat Display		x	x	x	x	x	x	x	06000814
SmartStat Wireless		x	x	x	x	x	x	x	05000179
SmartStat Wireless Expansion Unit		x	x	x	x	x	x	x	05000179A



The SmartStat Kit is a 24/7 programmable thermostat with monitoring system, LED indicators & display readouts. Monitors fuel level, filter condition, tracks run hours & alerts trip-out condition.

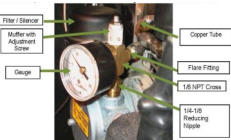
The SmartStat Wireless provides 24/7 remote thermostat control from any smart phone, tablet or internet connected device. Send email or text message for preventative maintenance, service schedule and trouble codes, as well as self-diagnoses minor problems such as clogged filters and low fuel.

Part Description	Current Models							Item Number
	140H	200H	340H	350H	200B	375B	500B	
WiFi Thermostat Kit	x	x	x	x	x	x	x	05000192



The WiFi Thermostat remotely monitors and controls your EnergyLogic heater and is fully programmable, Wi-Fi capable, touchscreen thermostat allows for control of settings locally or remotely, via Honeywell Total Connect Comfort web or mobile application. Notifications at the thermostat, and via e-mail, alert when the controlled climate loses power or falls outside of a specified temperature range. Takes advantage of existing power connection at the heater to supply proper, consistent power to the thermostat.

Part Description	Current Models							Item Number
	140H	200H	340H	350H	200B	375B	500B	
Air Compressor Silencer Kit	x	x	x	x	x	x	x	05000111
Replacement Filter - Silencer Kit	x	x	x	x	x	x	x	06000150
Replacement Gauge - Silencer Kit	x	x	x	x	x	x	x	20270300



The Air Compressor Silencer Kit provides 6 dB in noise reduction, which is a clearly noticeable reduction in noise level. For every 3 dB, another 50% of the remaining sound pressure is eliminated. We are able to do this by reducing much of the higher frequency noise from the compressor. Simple to install and replaces the standard inlet and outlet components of the air compressor. Necessary components are shipped in complete kits with replacement parts offering.

Part Description	Current Models							Item Number
	140H	200H	340H	350H	200B	375B	500B	
Meter - Enhanced Remote Hour	x	x	x	x	x	x	x	05000183



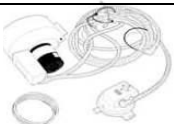
A Remote Hour Meter may be used when the hour meter that comes standard with every furnace and boiler is difficult to view.

Part Description	Current Models							Item Number
	140H	200H	340H	350H	200B	375B	500B	
Air Intake - Outside, AF	x	x		x	x			05000113
Air Intake - Outside, SF			x			x	x	05000114



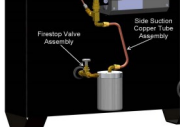
A Fresh Air Intake Kit would be used for environments prone to positive or negative air pressures or environments with debris floating in the air (for example, saw mill, concrete, detail shops).

Part Description	Current Models							Item Number
	140H	200H	340H	350H	200B	375B	500B	
Draft Inducer	x	x	x	x	x	x	x	05000090



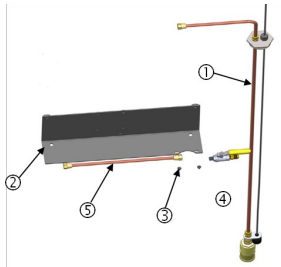
The Draft Inducer Kit would be used in an installation where a low draft condition is present. The low draft condition may not be determined until after the furnace or boiler is installed and operational. Ensure the furnace or boiler is operating as efficiently as possible in the given conditions.

Part Description	Current Models							Item Number
	140H	200H	340H	350H	200B	375B	500B	
Side Suction Kit - 250 Gallon Tank SW, 500 Gallon DW Tank	x	x	x	x	x	x	x	05000120
Side Suction Kit - 250 Gallon DW Tank	x	x	x	x	x	x	x	05000123
Side Suction Kit—500 Gallon SW	x	x	x	x	x	x	x	04000380



Side Suction Kits are designed to use with EnergyLogic storage tanks.  
 Kit includes: Side Suction Tube Assembly, Firestop Valve Assembly , Brass Fittings to connect the metering pump to side of the EL tank, and Low Level Cut-off Switch  
 \*Filter head assembly is now included with the furnace / boiler.

Part Description	Current Models							Item Number
	140H	200H	340H	350H	200B	375B	500B	
Top Suction 3/8" Pickup Tube w/ 1" Foot Valve	x	x			x			05000165
Top Suction 1/2" Pickup Tube w/ 1" Foot Valve			x	x		x	x	05000169
Valve - Foot 1"	x	x	x	x	x	x	x	04000086
Switch-Float, Replacement, 12' Cord	x	x	x	x	x	x	x	06000532



Save time / money and increase reliability when delivering fuel from the top of a tank. An EnergyLogic Top Suction Kit combines fuel pick-up with a low fuel cut off switch. The springless foot valve prevents loss of prime during long off cycles. This simple to install product is also adjustable to work with most tanks.

Part Description	Current Models							Item Number
	140H	200H	340H	350H	200B	375B	500B	
Band - Heater, Filter	x	x	x	x	x	x	x	20503109



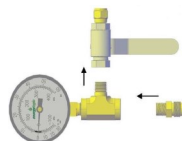
A Hot Filter Band would be used when the fuel in the tank that will pass through the spin-on filter is below 50°/10°C.

Part Description	Current Models							Item Number
	140H	200H	340H	350H	200B	375B	500B	
High Point Bleed Assembly	x	x	x	x	x	x	x	14070240



Use a High Point Bleed to purge air from the fuel system when the fuel piping is routed with high points which can trap air.

Part Description	Current Models							Item Number
	140H	200H	340H	350H	200B	375B	500B	
Kit - Gauge, Remote System All	x	x	x	x	x	x	x	05000091



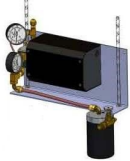
A Remote Pressure Gauge Kit installed below the preheater for monitoring the fuel system pressure when the fuel pump is not visible when working at the burner.

Part Description	Current Models							Item Number
	140H	200H	340H	350H	200B	375B	500B	
Filter Assembly - Cleanable 5"	x	x	x	x	x	x	x	14003111
Filter Assembly - Lg Cleanable 8"	x	x	x	x	x	x	x	14003114
*Filter Element - Cleanable 5"	x	x	x	x	x	x	x	06000027
*Filter Element - Lg Cleanable 8"	x	x	x	x	x	x	x	06000026



Use a cleanable filter when the reoccurring costs of suction line filter replacements has grown to a noticeable amount.

Part Description	Current Models							Item Number
	140H	200H	340H	350H	200B	375B	500B	
Kit - Pump and Filter Bracket	x	x	x	x	x	x	x	05000095
GFS Pump Bracket w/Firestop Valve (1 incl.; order additional for # of units)	x	x	x	x	x	x	x	04000097



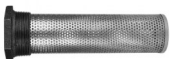
This bracket kit allows for mounting the EnergyLogic metering pump & filter head. It can be mounted on a wall or directly below the furnace from 3/8" all thread rod. Available for mounting the pump and filter head assembly on a Gravity Feed System.  
Note: pump & filter head sold separately.

Part Description	Current Models							Item Number
	140H	200H	340H	350H	200B	375B	500B	
Pump - Electric, Transfer, 4.25 GPM	x	x	x	x	x	x	x	20202129



Electric transfer pump which can be used to transfer fuel from a remote bulk fuel source to a day tank. It allows a bulk fuel storage tank to be remotely located (typically outdoors) with a separate day tank located indoors at or near the burner. Typically the indoor day tank is small in size requiring minimal space.

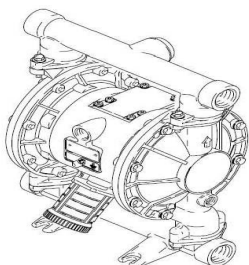
Part Description	Current Models							Item Number
	140H	200H	340H	350H	200B	375B	500B	
Diffuser, transfer pump - 2" Npt x 1 1/4" Npt	x	x	x	x	x	x	x	06000517



Use this tank diffuser (2" Npt x 1 1/4" Npt) with any transfer pump to reduce aeration of the fuel in the tank which can lead to furnace trip outs.

Part Description	Current Models							Item Number
	140H	200H	340H	350H	200B	375B	500B	
Pump - Diaphragm 1 in., 40 GPM	x	x	x	x	x	x	x	20202122
Pump - Diaphragm 3/4 in., 16GPM	x	x	x	x	x	x	x	20202121
Pump - Diaphragm Air Install Kit	x	x	x	x	x	x	x	20202126
Pump - Diaphragm Press Relief Valve	x	x	x	x	x	x	x	20202128
*Pump - Diaphragm Wall Mt, 3/4 in.	x	x	x	x	x	x	x	20202124
*Pump - Diaphragm Wall Mt, 1 in.	x	x	x	x	x	x	x	20202125
Pump - Diaphragm 20202121 Rebuild Kit	x	x	x	x	x	x	x	20202134
Pump - Diaphragm 20202122 Rebuild Kit	x	x	x	x	x	x	x	06000287
*Pump - Diaphragm Fluid Install Kit	x	x	x	x	x	x	x	20202127
Muffler, Diaphragm Pumps	x	x	x	x	x	x	x	06000750

A pneumatic transfer pump is used to transfer fuel from a remote bulk fuel source to a day tank. It allows a bulk fuel storage tank to be remotely located (typically outdoors) with a separate day tank located indoors at or near the burner. Typically the indoor day tank is small in size requiring minimal space.



Air Install Pressure Regulator Kit

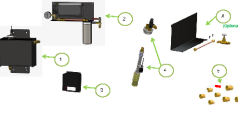


Muffler  
Pressure Relief Valve Kit

Rebuild Kit




Part Description	Current Models							Item Number
	140H	200H	340H	350H	200B	375B	500B	
Gravity Feed System—Solo	x	x	x	x	x	x	x	05000118
GFS Pump Bracket w/Firestop Valve	x	x	x	x	x	x	x	04000097
Pump w/fittings, 2 Stage Replacement								04000352
Tank Assembly—2 Gallon								04000297




EnergyLogic's GFS—Solo is designed to fuel a heater or boiler unit from a large fuel storage tank (sold separately). The system continuously filters and transfers fuel to an elevated reservoir, allowing gravity to maintain a constant fuel supply to the unit's metering pump. In the event of low fuel in either the reservoir or storage tank, system operation is interrupted and visual notification is illuminated.  
 Kit includes: 1/2" fuel pickup assembly w/float switch; two-stage transfer pump w/mounting bracket, filter head, and 8" filter; 2 gallon reservoir w/float switch assembly; low-fuel indicator box; metering pump mounting bracket w/filter head and firestop valve

Part Description	Current Models							Item Number
	140H	200H	340H	350H	200B	375B	500B	
Gravity Feed System—Crew	x	x	x	x	x	x	x	05000150
<b>05000150 - GFS Crew Service Parts</b>								
Tank Assembly - 10 Gallon GFS—Crew								04000420
Pump - Transfer, 10 GPH with motor								06000745
Pump - Transfer, 20 GPH with motor								06000820
Motor - Pump, 10 – 20 GPH								06001137
Gauge, Vacuum - 1/4" MNPT, 30/0" Vac								06000516
Float Switch Assembly - GFS, 4 Unit								04000288
Fuse, 8 amp								06000387
Pump Head, 10 GPH Replacement								06000895
Pump Head, 20 GPH Replacement								06001211



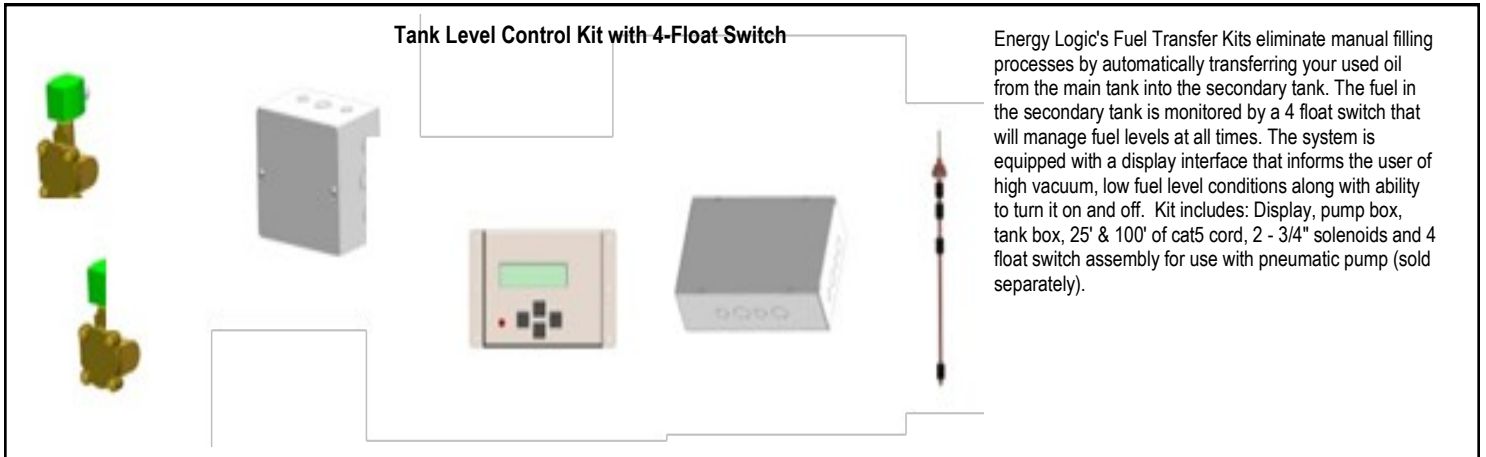
EnergyLogic's GFS—Crew supports the operation of up to 4 heater and boiler units from a single bulk fuel storage tank (sold separately). This automated system filters and transfers up to 20 gallons per hour of fuel to a 10 gallon, elevated reservoir, allowing gravity to maintain a constant fuel supply to the units' metering pumps. A display interface provides real-time feedback on the status of the system. In the event of low fuel in either the reservoir or the storage tank, system operation is interrupted and visual notification is illuminated.  
 Kit includes: 1/2" fuel pickup assembly w/float switch; 20 GPH transfer pump w/mounting bracket, filter head, vacuum sensor, and cleanable filter; 10 gallon reservoir w/float switch assembly; control box  
 EnergyLogic recommends that a metering pump mounting bracket w/filter head and firestop valve (PN: 04000097) be ordered for each unit that is to be serviced by the GFS.

Part Description	Current Models							Item Number
	140H	200H	340H	350H	200B	375B	500B	
Gravity Feed System—Fleet	x	x	x	x	x	x	x	05000132



EnergyLogic's GFS—Fleet facilitates the operation of up to 10 heater and boiler units from a single bulk fuel storage tank (sold separately). This enhanced automated system filters and transfers up to 40 gallons per hour of fuel to a 20 gallon, elevated reservoir, allowing gravity to maintain a constant fuel supply to the units' metering pumps. A display interface provides expanded real-time feedback on the status of the system. In the event of low fuel in either the reservoir or storage tank, system operation is interrupted and visual notification is illuminated.  
 Kit includes: 1" fuel pickup assembly w/float switch; 40 GPH transfer pump w/mounting bracket, filter head, vacuum sensor, and cleanable basket filter; 20 gallon reservoir w/float switch assembly; control box; pump box  
 EnergyLogic recommends that a metering pump mounting bracket w/filter head and firestop valve (PN: 04000097) be ordered for each unit that is to be serviced by the GFS.

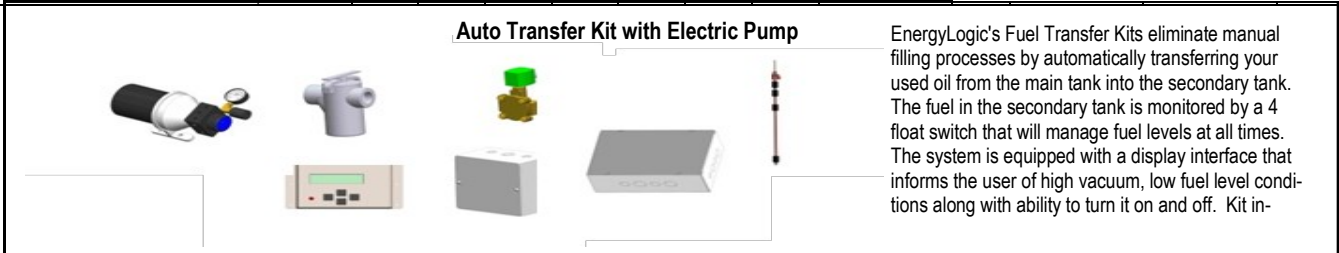
<b>GFS Replacement Parts</b>								
Part Description	* Not Shown	Current Models						Item Number
		140H	200H	340H	350H	200B	375B	
GFS Day Tank Assembly, 20 Gallon								04000001
4-Float Switch Assembly, Enhanced Multi-Unit GFS								04000185
Pump - GFS Transfer, 40 GPH								06000001
Filter - GFS, Cleanable with Basket								06000005
Switch, Vacuum								06000464
GFS Relay Terminal Base (Rev1 Multi Unit GFS)								06000003
*Pump, 40 GPH replacement (use for Enhanced & Rev.1)								06000347
*Motor, 40 GPH replacement (use for Enhanced & Rev.1)								06000524
*Basket, GFS Cleanable Filter								06000460
*Seal, GFS Basket Filter								06000152
Fuse, 10 amp								20552330
*Original GFS Float Switch, 3-float, no connector								04000002
*Original 10-Unit GFS Float Switch, 3-float with 7 pin connector								04000050



Energy Logic's Fuel Transfer Kits eliminate manual filling processes by automatically transferring your used oil from the main tank into the secondary tank. The fuel in the secondary tank is monitored by a 4 float switch that will manage fuel levels at all times. The system is equipped with a display interface that informs the user of high vacuum, low fuel level conditions along with ability to turn it on and off. Kit includes: Display, pump box, tank box, 25' & 100' of cat5 cord, 2 - 3/4" solenoids and 4 float switch assembly for use with pneumatic pump (sold separately).

Part Description	Current Models							Item Number
	140H	200H	340H	350H	200B	375B	500B	
Auto Transfer System (no pump)	x	x	x	x	x	x	x	05000205
Auto Transfer System w/Electric Pump, 40 GPH	x	x	x	x	x	x	x	05000206

Auto Transfer & Tank Level Control System Replacement Parts								
Switch, 4 Float, 30"	x	x	x	x	x	x	x	04000184
Valve, 3/4" Solenoid (NC-normally closed)	x	x	x	x	x	x	x	06000481
Control Box assembly	x	x	x	x	x	x	x	04000433
Display, Fuel Transfer and Tank Level Control (used on obsolete kits 05000133 and 05000134)	x	x	x	x	x	x	x	06000463



EnergyLogic's Fuel Transfer Kits eliminate manual filling processes by automatically transferring your used oil from the main tank into the secondary tank. The fuel in the secondary tank is monitored by a 4 float switch that will manage fuel levels at all times. The system is equipped with a display interface that informs the user of high vacuum, low fuel level conditions along with ability to turn it on and off. Kit in-

Fuel Transfer Systems Common Replacement Parts								
Part Description	Current Models							Item Number
	140H	200H	340H	350H	200B	375B	500B	
Control Box Assembly, Pump	x	x	x	x	x	x	x	04000182
Control Box Assembly, Tank	x	x	x	x	x	x	x	04000183
Display Module	x	x	x	x	x	x	x	06000463
Control board, Small Control box, Pump	x	x	x	x	x	x	x	06000466
Control board, Large Control box, Main	x	x	x	x	x	x	x	06000467
Patch Cord - Cat5e, 25' gray	x	x	x	x	x	x	x	06000472
Patch Cord - Cat5e, 50' black	x	x	x	x	x	x	x	06000480
Main Tank Float Switch	x	x	x	x	x	x	x	06000532
Switch, Vacuum	x	x	x	x	x	x	x	06000464
Gauge, Vacuum - 30/0 Vac, 1/4 MNPT	x	x	x	x	x	x	x	06000516
Float Switch with 20' Cord & Grip, Optional for GFS & Auto Transfer Sys - specify when ordering								06000675

\*1 incl. order additional per no. of units

A Flue kit must be installed with every furnace and boiler to provide a means of exhausting hot combustion gases out of the heat exchanger in the furnaces and out of the combustion chamber of the boilers. The combustion gases are routed outside the building and into the atmosphere. EnergyLogic flue kits are Class A, all fuel rated and meet or exceed NFPA guidelines and are made by a supplier that is a leader in quality and durability. The flue kits are packaged with some components that are custom built to mate up with EL furnace and boiler

Stainless Steel (SS) FLUE KITS		
Part Description	Item	
	Weight	Number
6 Inch - Flue/Chimney Kit A (Metal, Flat to 6/12 Pitch)	106lbs/48.1kg	05000097-SS
6 Inch - Flue/Chimney Kit A3 (Metal, Flat to 6/12 Pitch, w/3rd 36" pipe)	125lbs/56.7kg	05000098-SS
6 Inch - Flue/Chimney Kit B (Metal, 6/12 to 12/12 Pitch)	106lbs/48.1kg	05000099-SS
6 Inch - Flue/Chimney Kit B3 (Metal, 6/12 to 12/12 Pitch, w/3rd 36" pipe)	125lbs/56.7kg	05000100-SS
6 Inch - Flue/Chimney Kit C (Rubber - Flat to 12/12 Pitch)	116lbs/52.6kg	05000101-SS
6 Inch - Flue/Chimney Kit C3 (Rubber - Flat to 12/12 Pitch, w/3rd 36" pipe)	131lbs/59.4kg	05000102-SS
8 Inch - Flue/Chimney Kit A (Metal, Flat to 6/12 Pitch)	115lbs/52.2kg	05000103-SS
8 Inch - Flue/Chimney Kit A3 (Metal, Flat to 6/12 Pitch, w/3rd 36" pipe)	139lbs/63.1kg	05000104-SS
8 Inch - Flue/Chimney Kit B (Metal, 6/12 to 12/12 Pitch)	115lbs/52.2kg	05000105-SS
8 Inch - Flue/Chimney Kit B3 (Metal, 6/12 to 12/12 Pitch, w/3rd 36" pipe)	139lbs/63.1kg	05000106-SS
8 Inch - Flue/Chimney Kit C (Rubber - Flat to 12/12 Pitch)	125lbs/56.7kg	05000107-SS
8 Inch - Flue/Chimney Kit C3 (Rubber - Flat to 12/12 Pitch, w/3rd 36" pipe)	149lbs/67.6kg	05000108-SS
10 Inch - Flue/Chimney Kit A - (Metal - Flat Roof to 6/12 Pitch)	155lbs/70.31kg	05000121-SS

This flue material meets all NFPA guidelines and is UL 103HT and C-UL Listed. This flue material is an available in option in some "Complete Systems & Bundle Kits".

### Flue Kit A - Flat Roof

Item	Part Description	Qty	Item	Part Description	Qty
1	Flue Round Top	1	5	Finishing Collar / Pipe Adapter SW to DW	1
2	Storm Collar	1	6	Trim Collar	1
3	36 in Double Wall Pipe, SS	2	7	Metal Flashing - 0/12 to 6/12	1
4	Roof Support Kit	1	24	Flue 6 IN to 8 IN *	1
			26	Adapter 6 IN Crimped to 6 IN Duravent **	1

### Flue Kit B - Pitched Roof

Item	Part Description	Qty	Item	Part Description	Qty
1	Flue Round Top	1	5	Finishing Collar / Pipe Adapter SW to DW	1
2	Storm Collar	1	6	Trim Collar	1
3	36 in Double Wall Pipe, SS	2	8	Metal Flashing - 7/12 to 12/12	1
4	Roof Support Kit	1	24	Flue 6 IN to 8 IN *	1
			26	Adapter 6 IN Crimped to 6 IN Duravent **	1

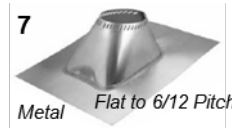
### Flue Kit C

Item	Part Description	Qty	Item	Part Description	Qty
1	Round Top Collar	1	9	Rubbert Boot Kit	1
3	36 in Double Wall Pipe, SS	2	24	Flue 6 IN to 8 IN *	1
5	Finishing Collar / Pipe Adapter SW to DW	1	26	Adapter 6 IN Crimped to 6 IN Duravent **	1
6	Trim Collar	1			

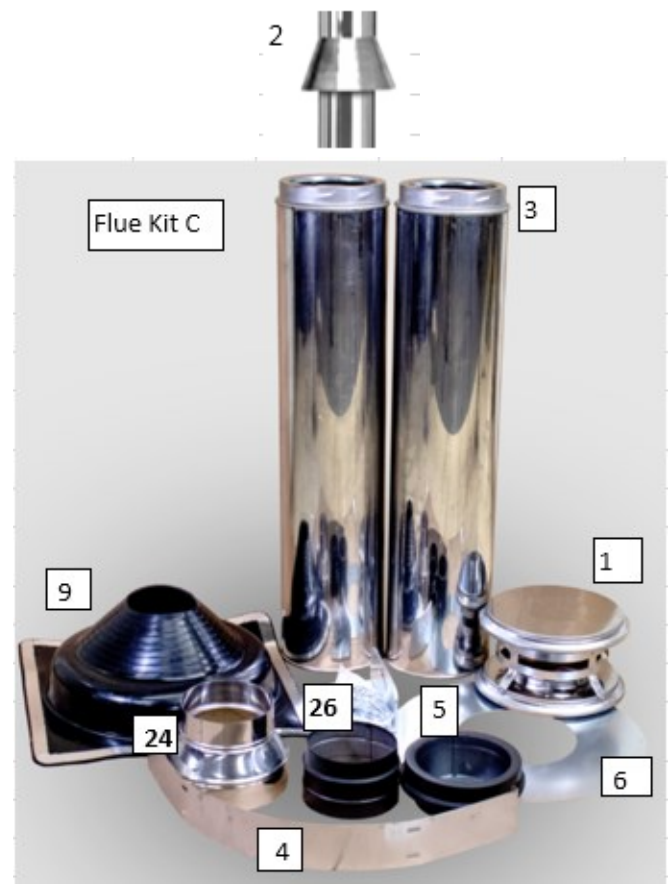
\* 6 Inch Flue Kit Only

6 Inch Only - Discard if not needed

Flue Kit A



Flue Kit B



## Flue Material - 6 Inch Standard Flue Material

6 Inch Flue Parts * Not Shown		Item	New Item
Ref.#	Part Description	Number	Number
1	Cap — Flue, Round Top 6 inch	06000085	81010062
2	Collar — Storm, 6 inch	06000086	4917
3	**Pipe — 36 in. x 6 inch Double Wall	06000087-SS	4764
4	Support — Roof, Kit 6 in. use w/ rubber boot	04000270	
4	Support — Roof, Kit 6 in. use w/ metal flashing	04000338	
5	Adapter — Pipe, SW to DW 6 inch	06000088	4912
6	Firestop, 6 inch	06000089	76001403
7	Flashing — Metal, 6 inch Flat to 6/12	06000090	4915
8	Flashing — Metal, 6 inch 6/12 to 12/12	06000092	4916
9	Boot Kit — Rubber, 6 inch Flat to 12/12	04000236	
10	Pipe — 12 in. x 6 inch Double Wall	06000094	4899
10	Pipe — 24 in. x 6 inch Double Wall	06000095-SS	
13	**Offset — 15 Degree Elbow, Kit 6 inch	06000096-SS	4903
14	**Offset — 30 Degree Elbow, Kit 6 inch	06000097-SS	4904
17	Shield — Attic Insulation 6 inch	06000099	4951
18	Band — Wall 6 inch	06000100	
19	Boot Only, 6 inch: Flat to 12/12	06000679	
20	**Tee & Plug 6 inch Insulated	06000102	
21	Spark Arrestor—Flue Cap 6 inch	06000101	
22	Resupport — Universal Interior 6 inch	06000103	
24	Reducer, 8 inch Crimped to 6 inch, female	06000091	
25	*Plate, Wall Flue Cover - 6 Inch* (4 required)	06000969	
26	Adapter 6 Inch Crimped to 6 Inch	76001405	

## Flue Material - 8 Inch Standard Flue Material

8 Inch Flue Parts * Not Shown		Item	
Ref.#	Part Description	Number	
1	Cap — Flue, Round Top 8 inch	20702140	81010124
2	Collar — Storm 8 inch	20702142	4943
3	**Pipe — 36 in. x 8 inch Double Wall	20702143-SS	4797
4	Support — Roof, Kit 8 in. use w/ rubber boot	04000271	
4	Support — Roof, Kit 8 in. use w/ metal flashing	04000339	
5	Adapter — Pipe, SW to DW 8 inch	20702145	4938
6	Firestop 8 inch	20702146	76001404
7	Flashing — Metal, 8 inch Flat to 6/12	20702147	4941
8	Flashing — Metal, 8 inch 6/12 to 12/12	20702148	4942
9	Boot Kit — Rubber, 8 inch Flat to 12/12	04000237	
10	Pipe — 12 in. x 8 inch Double Wall	20702150-SS	4925
10	Pipe — 24 in. x 8 inch Double Wall	20702151-SS	4796
13	**Offset — 15 Degree Elbow, Kit 8 inch	20702162-SS	4929
14	**Offset — 30 Degree Elbow, Kit 8 inch	20702163-SS	4930
15	Support — Universal Wall 8 inch	20702154	81010138
17	Shield — Attic Insulation 8 inch	20702156	
18	Band — Wall 8 inch	20702157	
19	Boot Only, 8/10 inch, Flat to 12/12	06000680	
20	Tee & Plug, Insulated + Wall Support 8 inch	13002140	
21	Spark Arrestor — Flue Cap 8 inch	20702141	
22	Resupport — Universal Interior 8 inch	20702159	
25	*Plate, Wall Flue Cover - 8 Inch* (4 required)	06000968	

*Note: #22 recommended for 15° & 30° Elbows*





Flue Kit C

## Flue Material - 10 Inch

Ref.#	Part Description	Item Number	New Item Number
1	Cap — Flue, Round Top 10 inch	06000400	4779
2	Collar — Storm, 10 inch	06000401	4784
3	Pipe — 36 in. x 10 inch Double Wall, SS	06000402	4783
4	Support — Roof, Kit 10 in. use w/ rubber boot	04000272	
4	Support — Roof, Kit 10 in. use w/ metal flashing	04000340	
5	Adapter — Pipe, SW to DW 10 inch	06000404	4775
6	Firestop, 10 inch	06000405	81010141
7	Flashing Metal, 10 inch 2/12 - 6/12	06000406	4776
8	Flashing — Metal, 10 inch 6/12 to 12/12	06000407	
9	Boot Kit — Rubber, 10 inch Flat to 12/12	04000238	
10	Pipe — 12 in. x 10 inch Double Wall, SS	20702310	4780
10	Pipe — 24 in. x 10 inch Double Wall, SS	20702311	
13	Offset — 15 Degree Elbow, Kit 10 inch	20702322	81010139
14	Offset — 30 Degree Elbow, Kit 10 inch	20702323	4753
15	Support — Wall, Kit 10 inch	20702314	4774
17	Shield — Attic Insulation 10 inch	20702316	
18	Band — Wall 10 inch	20702317	
19	Boot Only, 8/10 inch, Flat to 12/12	06000680	
20	Tee & Plug, Insulated + Wall Support 10 inch	13002320	
21	Spark Arrestor — Flue Cap 10 inch	20702321	
22	Resupport — Interior 10 inch	20702319	
25	*Plate, Wall Flue Cover - 10 inch* (4 required)	06000970	

*Note: #22 recommended for 15° & 30° Elbows*

EnergyLogic recommends avoiding 90 degree elbows & horizontal flue. When side wall penetration is necessary, our Thru-the-Wall Angled Connector Kit is a wall-supported chimney system with an angled length of flue pipe passing through an exterior wall, connecting to a Tee (an additional T is required at the furnace) and running vertically up the exterior wall to termination above the roof line. The angle of the through-wall piping allows for proper ventilation without all of the problems associated with 90° bends or straight horizontal piping. The Thru-the-Wall Angled Connector Kit provides all the necessary parts for a complete installation plus three 3' sections of Insulated Pipe. Additional sections may be added to reach desired chimney height. One Wall Band is included in the kit. Additional Wall Bands could be required if your vertical chimney run is more than 16' high. This flue material meets all NFPA guidelines and is UL 103HT Listed.

The Thru-the-Wall Angled Connector Kit can be used in conjunction with EnergyLogic wall mounting brackets to help get around eaves or other obstructions that might prevent the use of standard brackets. Our double-wall flue pipe with stainless steel inner pipe and galvanized outer pipe\* are zinc-plated and rust-resistant for toughness and quality that will last for years.

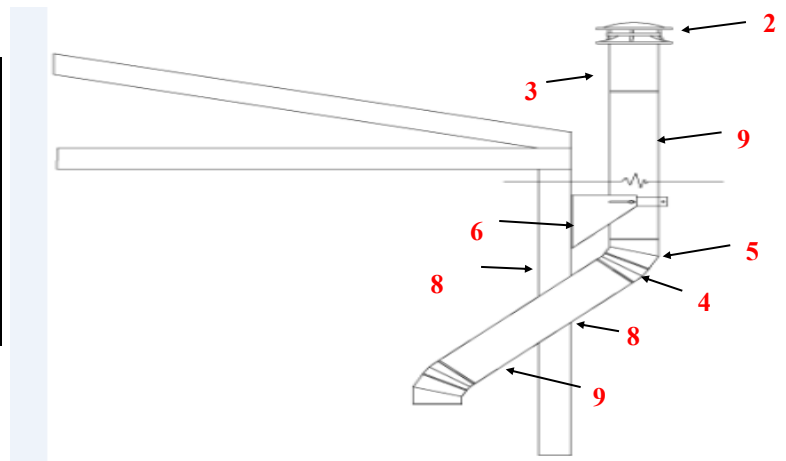
**IMPORTANT:** The Thru-the-Wall Angled Connector Kit is only to be used if roof penetration is not allowed or is not possible. If the through the wall kit is used, the length of angled pipe should be limited to that portion that goes through the wall. The pipe that leads up to the wall should be vertical to 30 degrees. As with all flue, yearly maintenance (cleaning) is required on the angled section (provide method for clean out).

**NOTE:** If going through the wall in Canada, the C-UL listing requires the use of the Blocked Vent Switch Kit – Field Controls Model WMO-1 200.

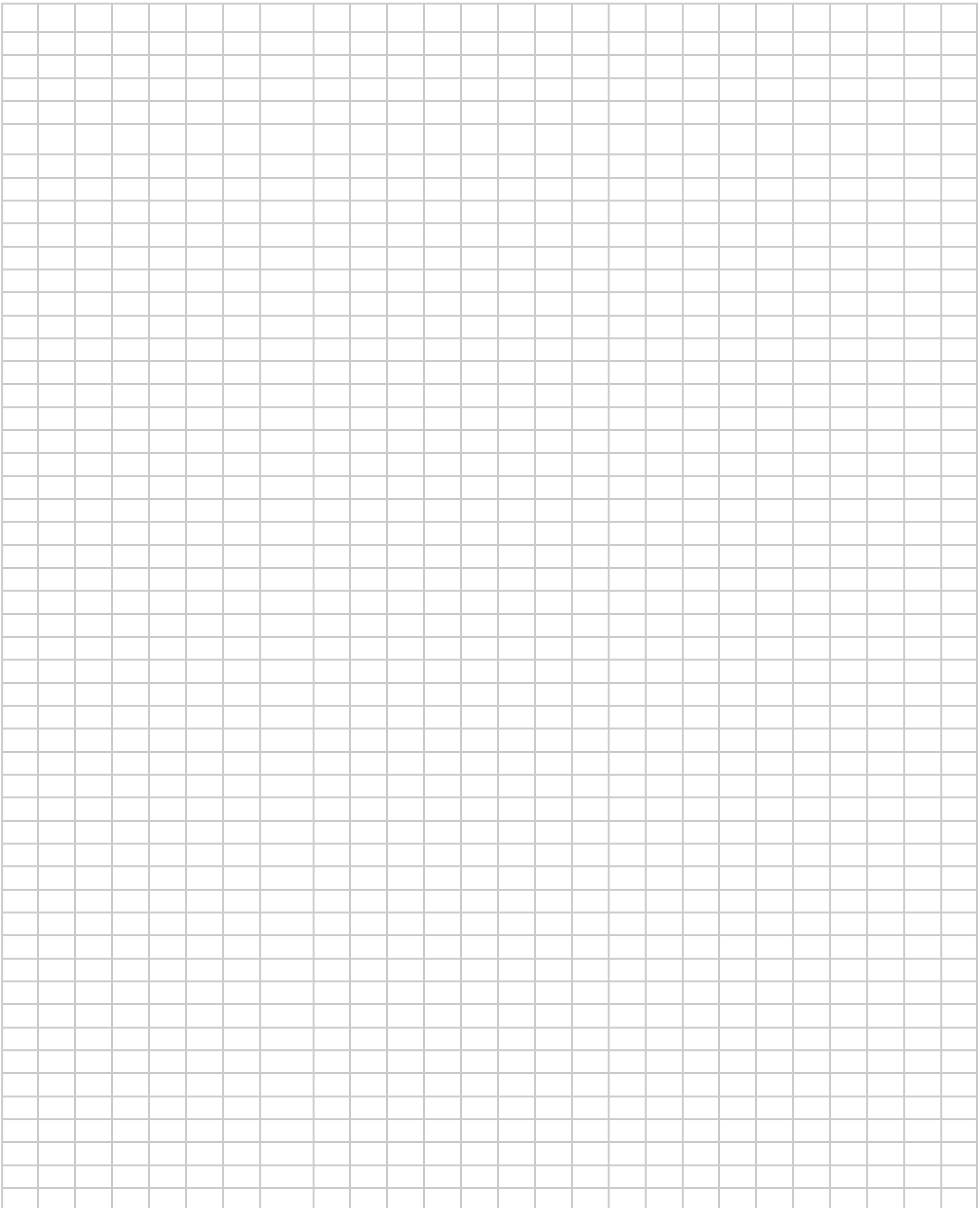
Through-the-Wall Flue Kits		Item
Part Description	Number	
6 Inch Through-the-Wall Angle Connector Kit* - Stainless Steel	05000176—SS	
8 Inch Through-the-Wall Angle Connector Kit* - Stainless Steel	05000177—SS	
10 Inch Through-the-Wall Angle Connector Kit* - Stainless Steel	05000178-SS	

\* Note: an additional T is required at the furnace when using these kits

*Not Shown Ref.#	Through-the-Wall Angled Connector Kit Includes Part Description	Qty
1	Round Top Flue Cap	1
2	*8 inch crimped to 6 inch Reduce (6" Kit Only)	1
3	18 in. Pipe	1
4	Elbow Kit, 15 degree (use with 30 for 45 degrees)	1
5	Elbow Kit, 30 degree	1
6	Wall Support Kit	2
7	*Chimney Pipe Adapter (SW to DW)	1
8	*Wall Plate, Flue Cover	4
9	36 in. Pipe (2 shown)	3



High Wind Cap Kit Part Description	Item Number
High Wind Cap Kit—6"	05000201-SS
High Wind Cap Kit—8"	05000202-SS
High Wind Cap Kit—10"	05000203-SS





*Where There's Energy, There's Opportunity™*



1024 BRYDEN AVE SUITE 1  
LEWISTON, ID 83501  
(208) 790-0365

[WWW.THEPRESSUREDR.COM](http://WWW.THEPRESSUREDR.COM)